

Foley Mountain Summer Scavenger Hunt Challenge

Tips and Tricks

- Remember to leave only footprints and take only memories and pictures!
 - Replace any rock, logs, or objects that you move while exploring
 - Leave flowers, leaves, and special treasures for the next person to see
 - Please take your garbage home with you
- Check out the trail map on the back to plan your adventure!
- Don't forget to be prepared for your outdoor adventure:
 - Pack water, sunscreen, a hat, hand sanitizer, and a snack
 - Protect yourself from nasty plants (poison ivy) and critters (ticks, mosquitoes, etc.) by wearing long pants and close toed shoes. Wear DEET or Icaridin based insect repellent and do a tick check when you get home!
- Be safe — wash your hands often and stay with your family!



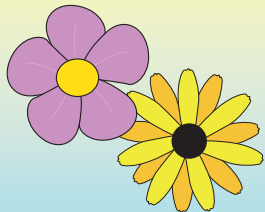
Things to see:

- A spider web
- The Village of Westport from Spy Rock (Play a game of I "Spy" and try and spot a church, the water tower, the harbour, and a barn.)
- A flying creature
- A crawling critter
- An animal that swims
- An animal home
- A special rock



Things to feel (don't forget to wash your hands!):

- The wind
- Soil between your fingers
- Soft moss
- A green leaf
- Tickly grass



Things to smell:

- A flower
- A squishy rotting log
- Pine needles
- Water at the edge of a pond
- Bark



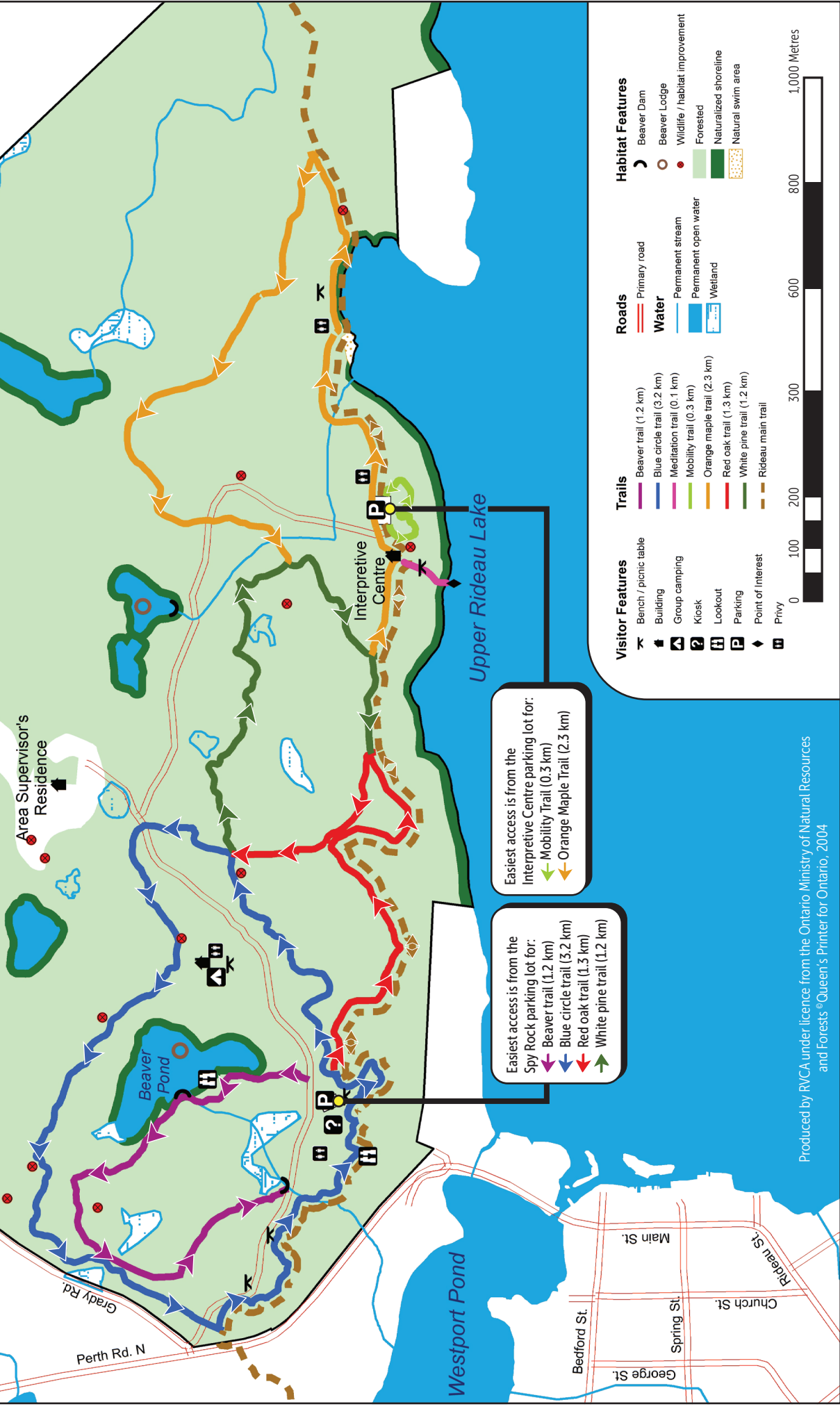
Things to hear:

- A buzzing insect
- A bird calling
- The wind in the trees
- Crunching leaves
- People having fun!

Physical Distancing Trail Directions



Foley Mountain Conservation Area



Easiest access is from the
Spy Rock parking lot for:
 - Beaver trail (1.2 km)
 - Blue circle trail (3.2 km)
 - Red oak trail (1.3 km)
 - White pine trail (1.2 km)

Easiest access is from the
Interpretive Centre parking lot for:
 - Mobility Trail (0.3 km)
 - Orange Maple Trail (2.3 km)

- | | | | |
|--|--|---|--|
| Visitor Features | Trails | Roads | Habitat Features |
| <ul style="list-style-type: none"> Bench / picnic table Building Group camping Kiosk Lookout Parking Point of interest Privy | <ul style="list-style-type: none"> Beaver trail (1.2 km) Blue circle trail (3.2 km) Meditation trail (0.1 km) Mobility trail (0.3 km) Orange maple trail (2.3 km) Red oak trail (1.3 km) White pine trail (1.2 km) Rideau main trail | <ul style="list-style-type: none"> Primary road Water Permanent stream Permanent open water Wetland | <ul style="list-style-type: none"> Beaver Dam Beaver Lodge Wildlife / habitat improvement Forested Naturalized shoreline Natural swim area |

