

ANNUAL REPORT 2019/2020



Watersheds
CANADA

A MESSAGE FROM THE EXECUTIVE DIRECTOR

Every Shoreline Matters. Every Action Counts. We have a great responsibility to take care of the very environment that sustains us. The choices we make in our everyday life matters, from how we manage our lands to what products and services we support. What we choose now has consequences for the future health of our freshwater lakes and rivers.

We are so proud of the amazing people that have taken action this year to restore their lands and improve habitat for fish and wildlife. These actions will directly impact our freshwater ecosystems. As we share these stories, we hope to inspire others to get involved. We are thankful to our individual and monthly financial partners,

supporters, and foundations who have helped to ensure this important work continues. Without you, we would not have accomplished any of this.

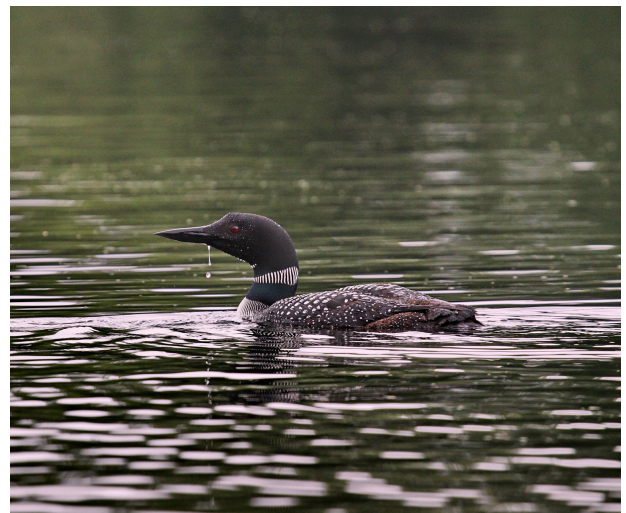
As we move into a new year heavily impacted by COVID-19, we ask you to help support us as we go through this unprecedented time of uncertainty and funding losses. Stay safe and healthy and know that we are here to help you take action towards protecting and restoring Canada's freshwater.



BARBARA KING
Executive Director

ABOUT WATERSHEDS CANADA

Watersheds Canada is a federally incorporated non-profit organization and registered Canadian charity. We are committed to providing programs to communities across the country to help enhance and protect the health of lakes and rivers. Our vision is for communities to come together to care for their waters, resulting in clean, healthy lakes and rivers that will support humans and wildlife for years to come.



CORE STAFF & BOARD OF DIRECTORS

STAFF

BARBARA KING

Executive Director

KAREN BALLENTINE

Administrative Assistant

MELISSA DAKERS

Lake Stewardship Coordinator

CHLOE LAJOIE

Natural Edge Program Manager

HEATHER MURPHY

Love Your Lake Program Manager

BRENDAN CREGG

Environmental Technician

MAGGIE STEVENSON

Restoration Technician

MONICA SEIDEL

Communications and
Fundraising Coordinator

BOARD

JEFF WARD

Retired Partnership Specialist for Ministry
of Natural Resources and Forestry

MARY C. RAE

Retired Municipal Lawyer

MARY ELLEN STOLL

Retired Manager for Ontario Ministry
of Natural Resources and Forestry

TOM WHILLANS

School of the Environment
Professor at Trent University

MARIEKA CHAPLIN

Executive Director: Nashwaak
Watershed Association Inc.

BRETT PAINTER

Physical Science Specialist: Environment
and Climate Change Canada

JÉRÔME MARTY

Project Director: Council of Canadian
Academies; Chair of the Partnership for
Science and Engineering (PAGSE)

LOVE YOUR LAKE



Healthy Shorelines for Healthy Lakes

In 2019, we partnered with a total of **5** regional organizations across Ontario, British Columbia, and Saskatchewan. These organizations included Muskoka Watershed Council, City of Greater Sudbury, Southern Interior Land Trust, Carrot River Valley Watershed Association, and North Saskatchewan River Basin Council. In total, **2,069** properties were assessed in 2019.

Shorelines are one of the most unique places on Earth. Individual actions can have a huge impact on this delicate interface. But how do we know if shorelines are healthy? The Love Your Lake program assesses the health of a lake's shoreline and encourages shoreline property owners to take voluntary stewardship actions.

Love Your Lake is a partnership program between Watersheds Canada and the Canadian Wildlife Federation. The program is delivered by local conservation groups and lake organizations. It connects shoreline property owners with the information they need to make smart land management choices that improve wildlife habitat, water quality, and the overall health of a lake.

Join us at www.loveyourlake.ca to learn about what you can do to your shoreline property to help you Love Your Lake.



LOVE YOUR LAKE

Natural is Beautiful



**TOGETHER WE HAVE
ASSESSED OVER
39,567 PROPERTIES
ON 163 LAKES**



PROVINCE	REGIONAL ORGANIZATION	LAKES ASSESSED
BRITISH COLUMBIA	SOUTHERN INTERIOR LAND TRUST	2
ONTARIO	MUSKOKA WATERSHED COUNCIL	2
	WATERSHEDS CANADA	4
	CITY OF GREATER SUDBURY	1
SASKATCHEWAN	CARROT RIVER VALLEY WATERSHED ASSOCIATION	1
	NORTH SASKATCHEWAN RIVER BASIN COUNCIL	2
LAKES SURVEYED (2019)	Bass Lake, Big Shell Lake, Dalhousie Lake, Desert Lake, Jeffrey Lake, Kahshe Lake, Lucien Lake, Meeting Lake, Okanagan Lake, Olmstead Lake, Vaseux Lake, Whitewater Lake	TOTAL LAKES: 12

LAKE LINKS



The 18th Annual Lake Links workshop took place on Saturday, October 26, 2019 at the Perth Civitan. We learned about the many citizen science initiatives available in Ontario, including a [handout](#) created by Holly Evans of Cataraqui Conservation.

Over 100 participants attended Lake Links 2019. Keynote speaker Kat Kavanaugh, of the Water Rangers, spoke on "Enhancing, Restoring & Exploring: Applications for Citizen Science on Your Lake".

Brenda Martin, Vice President of Malcolm & Ardoch Lakes Landowners' Association was the second recipient of the Gord Rodgers Memorial Award (pictured below). This award is given to someone who engages their community, promotes stewardship by example, and goes above and beyond for their lake community.

The 19th Annual Lake Links will take place online on October 24, 2020. For more details, visit: watersheds.ca/lake-links

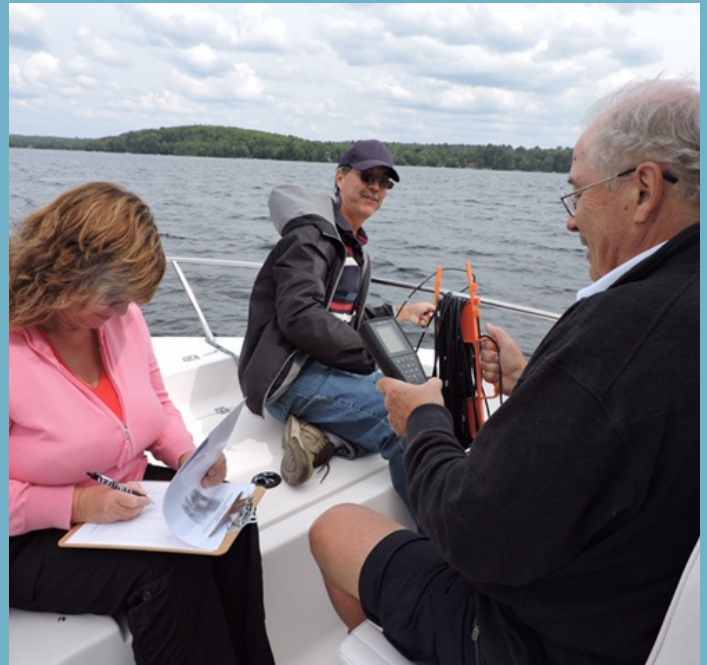


Photo: The presentation of the Gord Rodgers Memorial Award to Brenda Martin. The award was given by Barb Rodgers (Gord's wife) and Kelly Stiles (Mississippi Valley Conservation Authority).

2019 DANIEL AND SUSAN GOTTLIEB STEWARDSHIP GRANT

Funded by the Daniel and Susan Gottlieb Foundation, this grant provided lake associations and stewardship groups with the needed funds to engage their communities to participate in stewardship activities. In total, **15** volunteer lake stewardship groups in Ontario were awarded up to \$500 each.

(R) Canning Lake Property Owners Association doing a water quality sampling.



Because of this generous funding, projects had a positive impact on the health of lakes and rivers and involved lake communities. Groups were able to naturalize shorelines, conduct water quality sampling, create loon nesting platforms, conduct public outreach, and complete many other activities.

(L) Christie Lake Association building loon platforms.

MICROPLASTICS STUDY



Summer sampling led by JP Thonney in three local watersheds determined that out of 270 samples from 9 inland lakes studied, artificial materials (including fibres, fragments, and plastic film) were present in more than 90% of samples. Both urbanized environments and less developed portions of each lake were sampled.

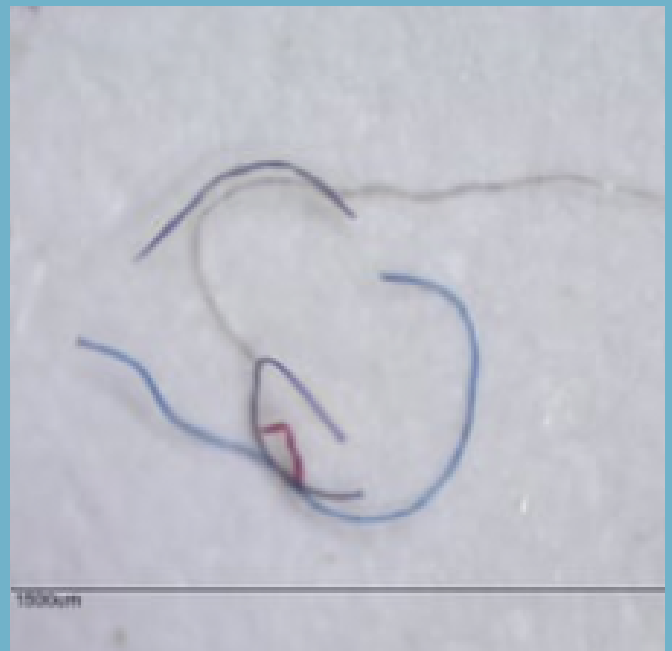
[Read full report](#)

(L) Water sampling taken on July 18, 2019.

Microplastics are known to persist in the environment at high levels, particularly in aquatic ecosystems. Fibres come from such items as fleece clothing and cigarette butts.

Watersheds Canada thanks D. Smith, B. King, D. Smith, D. Donald, and JP Thonney for logistical support, and the Daniel and Susan Gottlieb Foundation for financial support, of this study.

(R) Example of microfibres.



FISH HABITAT PROGRAMS

Enhancing Critical Fish Habitat

EASTON'S CREEK BROOK TROUT HABITAT ENHANCEMENT

Funding from Cabela's Canada Outdoor Fund and the LUSH Charity Pot made it possible for the planting and caging of **73** black willow and silver maple trees along Easton's Creek. This project addresses declining near-shore fish habitat quality by restoring in-water structures, spawning areas, and shoreline fish habitat.

Partners: Lanark County Stewardship Council, Lanark and District Fish and Game Conservation Club, Mississippi Valley Conservation Authority



MARY JANE'S CREEK WALLEYE SPAWNING BED RESTORATION

Funding from Cabela's Canada's Outdoor Fund and the LUSH Charity Pot allowed for the restoration of a historic walleye spawning bed in Mary Jane's Creek near Westport. There were **108** tonnes of washed river stone was placed in the creek to enhance the spawning habitat.

Partners: Westport Area Outdoors Association, local volunteers, Tackaberry G & Sons Construction Co Ltd.

FISH HABITAT PROGRAMS

continued...

IN-WATER FISH HABITAT ENHANCEMENT PROJECTS

Funding from the LUSH Charity Pot allowed for a total of **10** bundles of brush were built and deployed at Kashwakamak Lake and **12** bundles were built and deployed at Pine Lake. Underwater woody debris is a healthy component of lake environments. Sunken logs, trees, branches, and root balls provide excellent habitat for wildlife, including fish, turtles, birds, and invertebrates. Brush piles can provide fish with a food source, as well as shaded areas to rest, spawn, and escape predators.



Partners: local volunteers from the Pine Lake community, Nathaniel Smith, and Peter Johnson, Lake Steward of the Kashwakamak Lake Association



NATURAL EDGE



To make shoreline naturalizations easier, the Natural Edge Program guides landowners through every step of a shoreline restoration process, from planning to planting. It empowers property owners to restore their shoreline, protect their water quality, and create habitat for wildlife and pollinators using native trees, shrubs, and wildflowers.

With generous funding support from the Ontario Trillium Foundation and the Daniel and Susan Gottlieb Foundation, Watersheds Canada was able to help **52** shoreline landowners restore **5,759.45** metres of total shoreline length planted using **19,712** native trees, shrubs, and wildflowers.

Eligible landowners received the new Shoreline Re-Naturalization Starter Kit (pictured below), which includes:

- A site visit;
- A customized planting plan;
- 50 native plants;
- 45 coconut fibre mats;
- Mulch & tree guards (as needed); and
- 3 care guides.

In 2019, we launched Phase 2 of our self-developed Natural Edge iOS App which increased capacity and was more user friendly to encourage more partners to participate in the Program.



NATURAL EDGE



continued...

We planted two demonstration sites:
(1) Riverside Park in Belleville, funded by the Ontario Trillium Foundation (OTF), and was done in partnership with Quinte Conservation; and

(2) Consecon Mill Pond Conservation Area (pictured right), funded by the OTF and was done in partnership with Quinte Conservation and the County of Prince Edward.



Since 2013, 54,983 native trees, shrubs, and wildflowers have been planted on 286 sites across 80 water bodies. Because of the Natural Edge Program, 16,242.48 metres of total shoreline length has been enhanced and restored!



Six agricultural buffers in the Muskrat watershed were planted to reduce erosion and runoff. In total, **15,000** native trees and shrubs were planted along **3,814** metres of shoreline by **196** volunteers. Funded by OTF and delivered with Algonquin College - Pembroke campus and Muskrat Watershed Council.

What's next for the Natural Edge in 2020/2021?

- We have received funding to roll-out the Natural Edge Program with **5** grassroots partners in Ontario who are experiencing problems with water quality.
- We will move into our final year of our OTF Muskrat project which will see a total of **45,000** native trees and shrubs planted.
- We will deliver our second year of our OTF Quinte project which will see a total of **23,700** native trees, shrubs, and wildflowers planted.

FINANCIAL SUMMARY

REVENUE:

NGO CONTRIBUTIONS	\$117,647
FOUNDATIONS	\$117,270
GOVERNMENT GRANTS	\$333,302
PROGRAM INCOME & OTHER DONATIONS	\$38,448

TOTAL : \$606,667

EXPENSES:

PROGRAM EXPENSES	\$547,691
OPERATING COSTS	\$44,655

RESERVE FUND	\$10,000
--------------	----------

TOTAL : \$602,346

PARTNERS

Algonquin College's Office of Applied Research and Innovation;
Algonquin College's Waterfront Campus;
Biodiversity Education and Awareness Network;
Blue Fish Canada;
Canadian Wildlife Federation;
Carrot River Valley Watershed Association;
Carson, Trout, Lepine & Greenan Lakes Association;
Cataragui Conservation;
City of Greater Sudbury;
Dalhousie Lake Association;
Desert Lake Property Owners' Association;
Federation of Ontario Cottagers' Associations;
Forests Ontario;
Friends of the Tay Watershed Association;
Friends of Wellers Bay;
JP Thonney;
Kahshe Lake Ratepayer's Association;
Kashwakamak Lake Association;
Kawartha Lake Stewards Association;
Lake Networking Group;

Lanark & District Fish and Game Conservation Club;
Lanark County Stewardship Council;
Mississippi Valley Conservation Authority;
Muskoka Watershed Council;
Muskrat Watershed Council;
Nathaniel Smith and the Pine Lake community;
North Saskatchewan River Basin Council;
Olmstead-Jeffrey Lake Association;
Ontario Ministry of Natural Resources & Forestry;
Peter Johnson;
Pinegrove Productions;
Quinte Conservation;
Quinte Field Naturalists;
Rideau Valley Conservation Authority;
Southern Interior Land Trust;
Tackaberry G & Sons Construction Co Ltd.;
The Corporation of the County of Prince Edward;
The Land Between;
Water Rangers;
Westport Area Outdoors Association;
White Lake Preservation Project

FINANCIAL SUPPORTERS

A. & F. Mallamo;
A. Bortolus;
A. Gourlay-Langlois;
A. Nordin;
Andress' Your Independent Grocer;
B. Patrick;
B. Robbins;
B. Ward;
C. & J. Crocker;
C. Allmendinger;
C. Crump;
C. Robbins;
C. Wiensczyk;
Cabela's Canada Outdoor Fund;
Cade Associates Insurance Brokers Limited;
Canada Summer Jobs;
Canadian Wildlife Foundation;
Capra Design Ltd.;
Catarqui Region Conservation Authority;
CICAN Clean Tech Internship Program;
D. & A. Best;
D. & L. Galbraith;
D. C. Fraser;
D. McCauley;
D. Taylor;
D. Vallee;
Daniel and Susan Gottlieb Foundation;
E. & R. Bordeleau;
E. Barr;
E. Wallace;
F. E. Huff;
F. E. Roy;
F. Mills;

M. & B. Patrick;
Federation of Ontario Cottagers'
Associations;
Friends of the Tay Watershed
Association;
G. & D. Broughton;
G. Graser;
G. Manchester;
Gilmore Reproductions;
H. Crosby;
H. Evans;
I. Dardick;
J. & A. McDougall;
J. & J. Hall;
J. & P. Martingale;
J. Marty;
J. McAllister;
J. McMichael;
J. Muston;
J. Pope;
J. Sparrow;
J. Tomlin;
J. Ward;
J. Wiensczyk;
K. Browne;
K. Inrig;
K. Kavanagh;
K. Watson;
L. Bellamy;
L. Kiil;
Latonnell Conservation Symposium;
LUSH Charity Pot;
M&R Feeds and Farm Supply;

M. & G. Rae;
M. Bowles;
M. Chaplin;
M. Dakers;
M. E. Stoll;
M. Sergeant;
Mississippi Valley Conservation
Authority;
Modern Niagara;
N. Bliss;
N. Crockford;
Ontario Trillium Foundation;
P. Johnson;
R. Bell;
Rideau Valley Conservation
Authority;
R. C. Westland;
S. Gray;
S. Lunn;
S. O'Brien;
S. Wainio;
T. Samulak & J. Quenneville;
T. Whillans;
The Land Between;
The McLean Foundation;
The Rogers Foundation;
The Sharbot Group Ltd.;
W. & G. Hamm;
W. Candy;
W. Collins;
W. Crosbie;
Whitewater Brewing Company

IN MEMORY AND IN HONOUR DONATIONS

In honour and in memory donations are a meaningful way to recognize a friend, co-worker, or loved one. Your donation will honour them while restoring and enhancing critical shoreline habitat across Canada.

In Honour

Robert Bortolus
Mike & Kandace Crosby
Dawn Broughton
Susan Kiil

In Memory

Linda McCauley
Terry Fischer





Watersheds
C A N A D A



115-40 Sunset Blvd
Perth ON, K7H 2Y4

watersheds.ca
info@watersheds.ca

Canadian charity
863555223RR0001