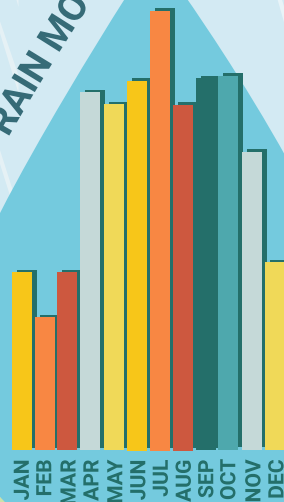


CARING FOR YOUR RAIN BARREL

GUIDE TO MAINTENANCE AND USE

Clear leaves and debris from the inlet regularly

WHEN DOES IT RAIN MOST?



Direct overflow at least 6 feet away from the foundation of your house

WINTERIZE YOUR RAIN BARREL

1. Drain the rain barrel entirely.
2. Remove the lid and anything else that can be unscrewed, including the spigot and overflow hoses if possible.
3. Detach the rain barrel from your downspout and redirect the flow either by re-attaching a length of downspout or switching your diverter to direct water away from your foundation.
4. Store your barrel upside-down in a garage, shed or outdoor area.

WHAT IS A DIVERTER?



A downspout diverter attaches to your downspout and channels water into the barrel until it's full. At that point, the diverter sends the water through the downspout and away from your foundation. They also make it easier to winterize your rain barrel as most come with winter caps, eliminating the need to re-attach your downspout.

USING YOUR RAINWATER

Here are some tips to help you drain your rain barrel after each rain:

1

Elevate your rain barrel on a stand so you can easily fill a watering can.

2

Attach a soaker hose and extend it through nearby gardens or lawn.

3

Install your rain barrel onto a downspout that is near your garden or potted plants that require lots of water.

4

Install your rain barrel in a location that is uphill from an area you want to water. You can use a garden hose to water when gravity is helping!